

Bi2
fan coils

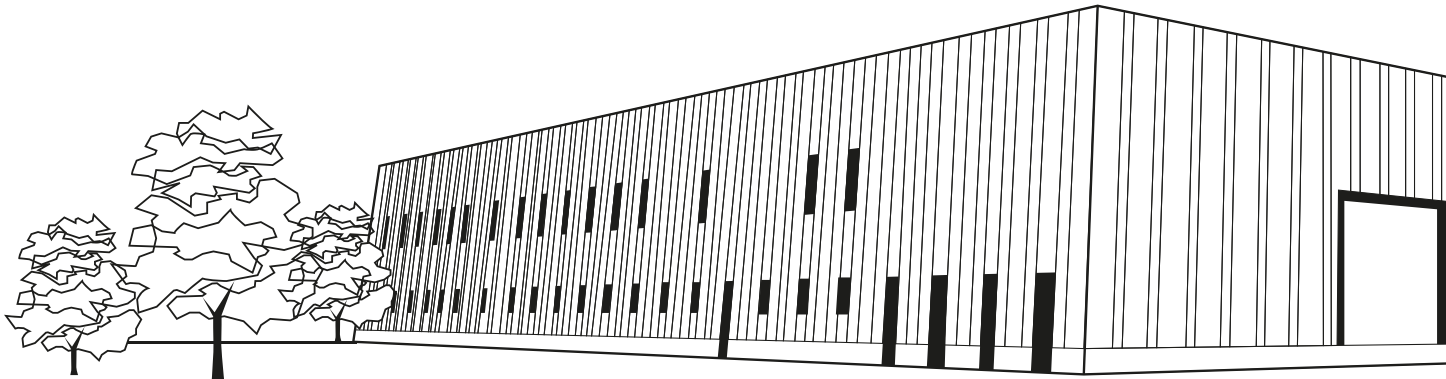


 **OLIMPIA
SPLENDID**
HOME OF COMFORT

HYDRONIC SYSTEMS,
RENEWABLE ENERGY
AND AIR CONDITIONING



With **Olimpia Splendid** you are making the right choice: selected raw materials, efficient low-consumption products, designed to minimize environmental impact after disposal.



Cellatica, BS, Italy
Headquarters



Gualtieri, RE, Italy
Logistics Hub



Paris, France
Commercial branch



Madrid, Spain
Commercial branch

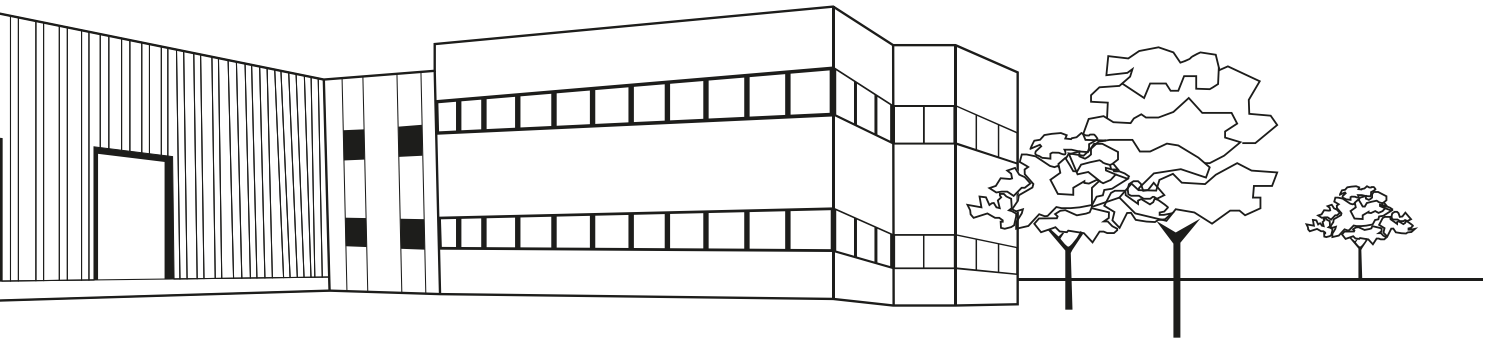


Shanghai, China
Commercial branch

Olimpia Splendid is a founding member and supporter of ecoped and ridomus:



The Ridomus Consortium was established in 2006 to promote environmental protection, guarantee correct handling and safe storage of dangerous substances and materials, as well as the recycling of reusable material. Our membership in the consortium guarantees controlled disposal of our products



COMPANY AND SERVICES

03



PRODUCTION PLANTS AND COMMERCIAL BRANCHES

Olimpia Splendid products are manufactured according to the most demanding qualitative requirements and subsequently marketed all over the world. **Olimpia Splendid's** brand is present in over 45 markets worldwide.

R&D - 100% DESIGNED IN ITALY

Our products are designed, qualified and inspected in Italian laboratories. This guarantees the highest quality and efficiency of all our products and the best of the Italian style.



SLR smart Total flat fan coil with radiant panel

Design by S. Ercoli & A. Garlandini

26



RADIANT TUBE+

Once the set point is reached with the help of the fan, the temperature is maintained through the radiant effect only, with no electrical consumption. The Radiant Tube+ Technology allows to increase the heat exchange thanks to the direct contact with the front panel, to decrease consistently the fan coil weight, to diminish the thermal inertia, while maximising the radiant effect on the whole panel.



COMPACT TECHNOLOGY

Means constant care to every detail, to design and to components engineering. Products are therefore invented, designed and created with extremely compact sizes. Bi2 is only 12.9 cm deep, versus the 20-25 cm of a traditional fan coil.



AIR SYSTEM

The structure of the fan and the electronic motor that modulates its speed ensure extremely uniform air distribution and homogeneous room temperature.



METAL FRAME

The exquisite look, its lightness and the solidity of Bi2 are design characteristics made possible by the painted metal frame and the aluminum grid.



SILENT SYSTEM

The tangential fan, in comparison to traditional fans, ensures the minimum noise level combined with maximum air circulation.



FLAT DESIGN

No front grid. Complete integration with the building.

FEATURES

COOLING, DEHUMIDIFYING, HEATING AND AIR CLEANING

Compact: only 12.9 cm deep

The range includes 5 models: SLR smart 200, SLR smart 400, SLR smart 600, SLR smart 800, SLR smart 1000

Total flat design: no front grid. Complete integration with the building.

Installation versatility: on wall or floor standing



Wall installation.



Floor installation.

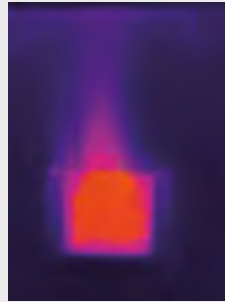


12.9 cm

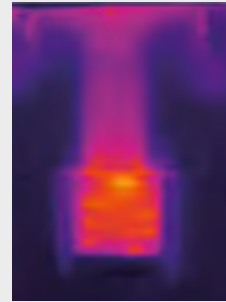


THERMOGRAPHY COMPARISON BETWEEN FAN COIL WITH TRADITIONAL RADIANT PLATE AND WITH THE TUBE RADIANT PANEL TUBE +

(at the following condition: air temperature 20 °C, water inlet 50 °C)



Other radiant devices



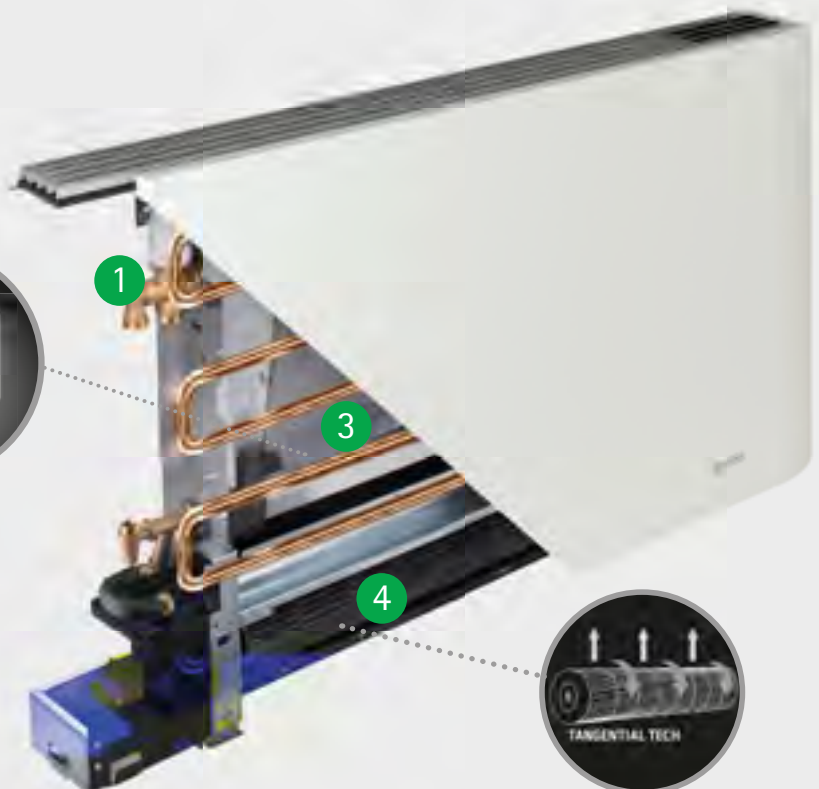
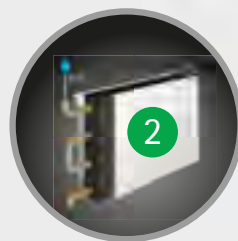
Tube radiant panel



TECHNICAL FEATURES

27

- 1 Electrothermal fuse
- 2 Tube Radiant Panel
- 3 Coil
- 4 High efficiency tangential fan

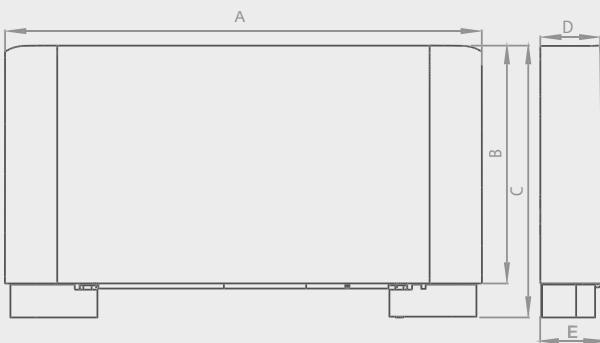


TANGENTIAL TECH

MODEL		B12 2 pipes SLR smart version with radiant panel				
		SLR smart 200	SLR smart 400	SLR smart 600	SLR smart 800	SLR smart 1000
White - Version Full-flat	code	01417	01418	01419	01420	01421

MODEL		B12 2 pipes SLR smart version with radiant panel				
		SLR smart 200	SLR smart 400	SLR smart 600	SLR smart 800	SLR smart 1000
(a) Total cooling capacity	kW	0,83	1,76	2,63	3,33	3,81
Sensible cooling capacity	kW	0,62	1,27	1,96	2,65	3,01
Water flow rate	l/h	142	302	453	573	655
Water pressure drops	kPa	7,2	8,4	22,5	18,6	24,9
(b) Heating capacity 50°C	kW	1,16	2,48	3,42	4,47	5,22
Water flow rate (50°C)	l/h	164	348	521	659	753
Water pressure drops (50°C)	kPa	3,5	6,4	16,3	16,7	19,9
(c) Heating capacity	kW	2,03	4,21	5,86	7,61	8,93
Water flow rate (70°C)	l/h	175	362	504	654	768
Water pressure drops (70°C)	kPa	3,7	6,4	14,3	15,3	19,1
Max. static heating capacity (50°C)	W	356	424	502	621	767
Max. static heating capacity (70°C)	W	593	707	836	1035	1279
Coil water content	l	0,47	0,8	1,13	1,46	1,8
Radiator plate water content	l	0,9	1,3	1,7	2,1	2,4
Maximum operating pressure	bar	10	10	10	10	10
Water pipe fittings inches	in	Eurokonus 3/4	Eurokonus 3/4	Eurokonus 3/4	Eurokonus 3/4	Eurokonus 3/4
(d) Air flow rate max	m³/h	162	320	461	576	648
(d) Air flow rate min	m³/h	55	155	248	370	426
Supply voltage	V/ph/Hz	230/1/50	230/1/50	230/1/50	230/1/50	230/1/50
Max power input	A	0,11	0,24	0,25	0,26	0,27
Max power input at minimum speed	W	17	38	41	42	43
(g) Max air flow sound pressure	dB(A)	41	43	43	43	44
(g) Min. air flow sound pressure	dB(A)	25	28	29	26	28

28 TECHNICAL DATA

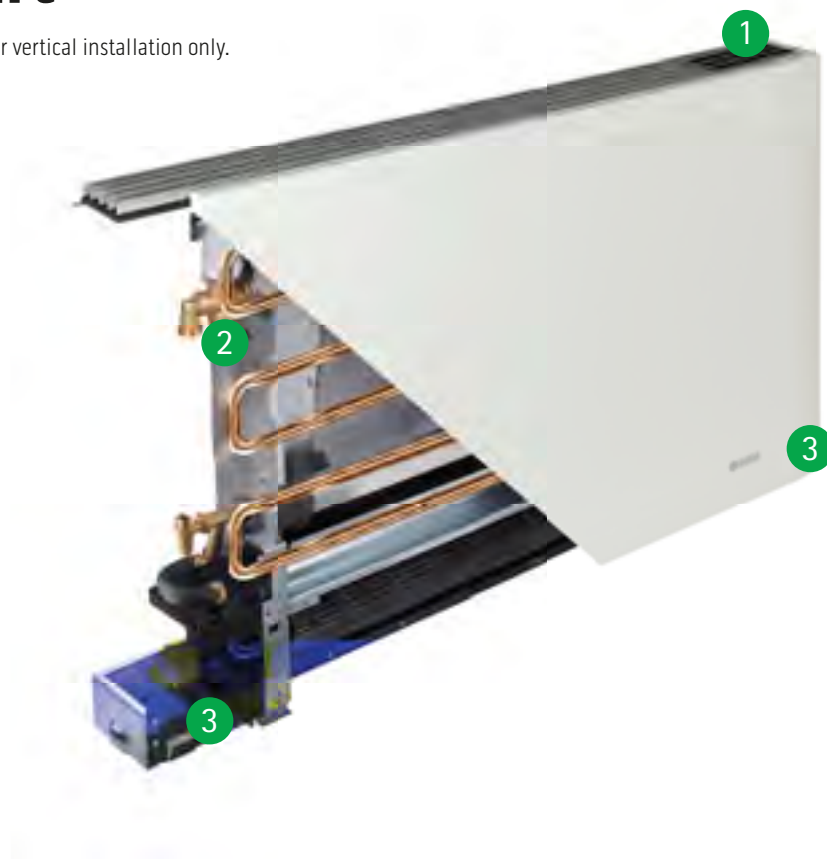


VERSION SLR smart (with radiant panel)		SLR smart 200	SLR smart 400	SLR smart 600	SLR smart 800	SLR smart 1000
A	mm	759	959	1159	1359	1559
B	mm	579	579	579	579	579
C	mm	659	659	659	659	659
D	mm	129	129	129	129	129
E	mm	150	150	150	150	150
Weight	kg	13,5	15,5	19,5	22,5	25,5

- (a) Water temperature at coil inlet 7°C, water temperature at coil outlet 12°C, Room temperature 27° C db and 19°C wb
 (b) Water temperature at coil inlet 50°C, water flow rate as for cooling + plate, ambient air temperature at inlet 20°C.
 (c) Water temperature at coil inlet 70°C, water temperature at coil outlet 60°C, ambient air temperature at inlet 20°C.
 (d) Air flow measured with clean filters.
 (g) Sound pressure measured according to the ISO 7779.

SLR smart

Model with radiant panel for vertical installation only.



CONFIGURATIONS

1

CONTROL KIT



2

PLUMBING KIT



3

DESIGN KIT





Total flat fan coil



Design by S. Ercoli & A. Garlandini

30



SILENT SYSTEM

The tangential fan, in comparison to traditional fans, ensures the minimum noise level combined with maximum air circulation.



COMPACT TECHNOLOGY

Means constant care to every detail, to design and to components engineering. Products are therefore invented, designed and created with extremely compact sizes. Bi2 is only 12.9 cm deep, versus the 20-25 cm of a traditional fan coil.



AIR SYSTEM

The structure of the fan and the electronic motor that modulates its speed ensure extremely uniform air distribution and homogeneous room temperature.



METAL FRAME

The exquisite look, its lightness and the solidity of Bi2 are design characteristics made possible by the painted metal frame and the aluminum grid.



FLAT DESIGN

No anti-aesthetical front grid. Complete integration with the building.

FEATURES

COOLING, DEHUMIDIFYING, HEATING AND AIR CLEANING

Compact: only 12.9 cm deep

The range includes 5 power models: SL smart 200, SL smart 400, SL smart 600, SL smart 800, SL smart 1000

Total flat design: no anti-aesthetical front grid. Complete integration with the building.

Installation versatility: on wall or floor standing



Wall installation.



Floor installation.



Ceiling installation.



TECHNICAL FEATURES

31

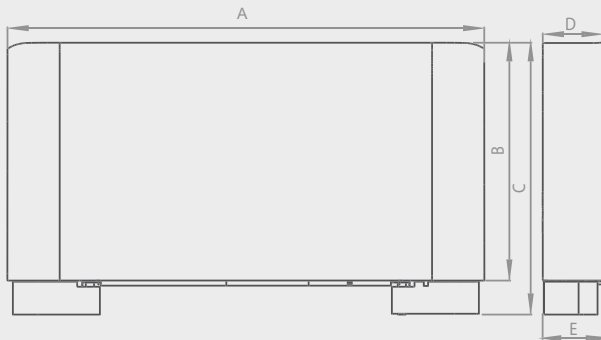
- 1 Electrothermal fuse
- 2 Coil
- 3 High efficiency tangential fan



MODEL		B12 2 pipes SL smart version without radiant panel				
		SL smart 200	SL smart 400	SL smart 600	SL smart 800	SL smart 1000
White	code	01409	01410	01411	01412	01413

MODEL		B12 2 pipes SLR smart version without radiant panel				
		SL smart 200	SL smart 400	SL smart 600	SL smart 800	SL smart 1000
(a) Total cooling capacity	kW	0,83	1,76	2,63	3,33	3,81
Sensible cooling capacity	kW	0,62	1,27	1,96	2,65	3,01
Water flow rate	l/h	142	302	453	573	655
Water pressure drops	kPa	7,2	8,4	22,5	18,6	24,9
(b) Heating capacity 50°C	kW	1,09	2,35	3,19	4,10	4,86
Water flow rate (50°C)	l/h	142	302	453	573	655
Water pressure drops (50°C)	kPa	5,7	6,6	16,3	14,0	18,3
(c) Heating capacity	kW	1,89	3,99	5,47	6,98	8,31
Water flow rate (70°C)	l/h	162	343	471	600	714
Water pressure drops (70°C)	kPa	6,7	7,6	16,1	14,0	19,8
Coil water content	l	0,47	0,8	1,13	1,46	1,8
Maximum operating pressure	bar	10	10	10	10	10
Water pipe fitting inches	in	Eurokonus 3/4	Eurokonus 3/4	Eurokonus 3/4	Eurokonus 3/4	Eurokonus 3/4
(d) Air flow rate max	m³/h	162	320	461	576	648
(d) Air flow rate min	m³/h	55	155	248	370	426
Supply voltage	V/ph/Hz	230/1/50	230/1/50	230/1/50	230/1/50	230/1/50
Max current consumption	A	0,11	0,24	0,25	0,26	0,27
Max power input	W	17	38	41	42	43
(g) Max air flow sound pressure	dB(A)	41	43	43	43	44
(g) Min. air flow sound pressure	dB(A)	25	28	29	26	28

32 TECHNICAL DATA



VERSION SL smart
(without radiant panel)

		SL smart 200	SL smart 400	SL smart 600	SL smart 800	SL smart 1000
A	mm	759	959	1159	1359	1559
B	mm	579	579	579	579	579
C	mm	659	659	659	659	659
D	mm	129	129	129	129	129
E	mm	150	150	150	150	150
Weight	kg	11,5	13	15,5	18,5	21,5

- (a) Water temperature at coil inlet 7°C, water temperature at coil outlet 12°C, Room temperature 27° C db and 19°C wb.
 (b) Water temperature at coil inlet 50°C, water flow rate as for cooling + plate, ambient air temperature at inlet 20°C.
 (c) Water temperature at coil inlet 70°C, water temperature at coil outlet 60°C, ambient air temperature at inlet 20°C.
 (d) Air flow measured with clean filters.
 (g) Sound pressure measured according to the ISO 7779.

SL smart

Model without radiant panel for vertical or horizontal installation only. *

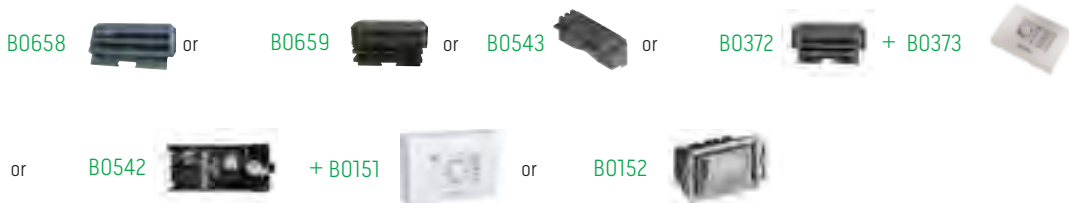


CONFIGURATIONS



1

CONTROL KIT



2

PLUMBING KIT



3

DESIGN KIT



* For the horizontal installation in cooling mode is necessary the drain pan kit.